



# Chain Link (Galvanized)

Type	Galvanization Layer GSM	Expected Life of Galvanizing
Sachi PlatinumLink	120 to 140 gsm	7 - 12 Years
Sachi GoldLink	90 to 100 gsm	5 - 7 Years
Sachi SilverLink	50 to 90 gsm	3 - 5 Years
Sachi BronzeLink	<50 gsm	2 - 3 Years

All the Chainlink products are available with Galvanizing Certificate to ensure best quality.

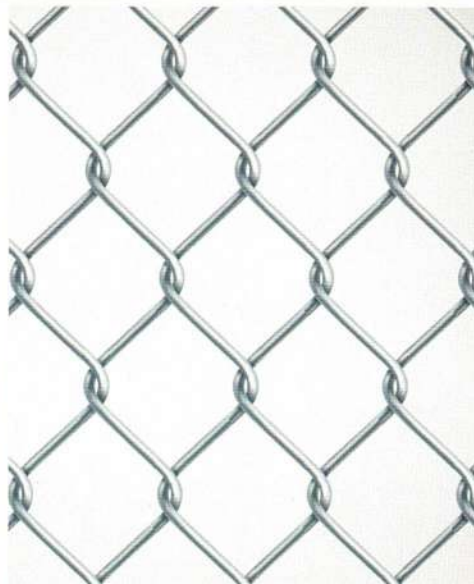
Wire Diameter	1.6 mm to 4 mm	16 guage to 8 guage
Pitch	25 mm to 100 mm	1 inch to 4 inch
Max. Width	3 mtr	10 feet
Min. Width	0.7 mtr	2.5 feet
Std. Roll Length	15 mtr	50 feet approx

**WE ALSO MANUFACTURE Customized ChainLinks as per requirement**

**ALSO AVAILABLE LC Wire Rod** (5.5 to 14mm, Carbon 0.080 / 0.10 / 0.12)

**Drawn Wire, Barbed Wire, Razor (Concertina) Wire, Gabian Wire, Galvanized Wire**

**COATING: Epoxy Coating | PVC Coating | Powder Coating**



# Galvanized Chain Link

WT - RT



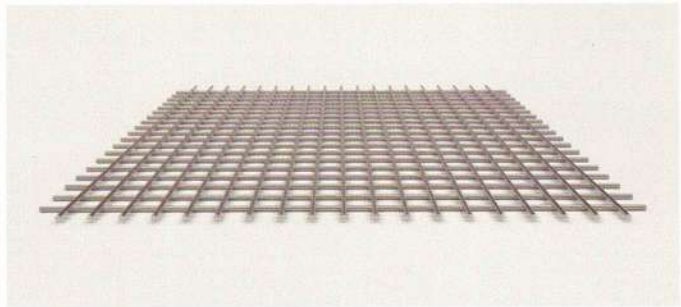
	Wire Spacing		KG Per	Total	Mesh WT	Mesh KG
	Main	Cross				
	MM	MM				
<b>2 x 2</b>	25	25	0.025	80	2.03	0.19
	30	30	0.025	68	1.72	0.16
	32	32	0.025	63	1.59	0.15
	50	50	0.025	41	1.06	0.10
	55	55	0.025	37	0.97	0.09
	65	65	0.025	32	0.83	0.08
	75	75	0.025	27	0.71	0.07
	100	100	0.025	20	0.54	0.05
<b>2.4 x 2.4</b>	25	25	0.036	80	2.89	0.27
	30	30	0.036	68	2.46	0.23
	40	40	0.036	50	1.83	0.17
	50	50	0.036	41	1.51	0.14
	55	55	0.036	37	1.38	0.13
	65	65	0.036	32	1.18	0.11
	75	75	0.036	27	1.00	0.09
	100	100	0.036	20	0.76	0.07
<b>2.5 x 2.5</b>	25	25	0.039	80	3.14	0.29
	30	30	0.039	68	2.66	0.25
	50	50	0.039	40	1.59	0.15
	55	55	0.039	36	1.45	0.14
	65	65	0.039	32	1.28	0.12
	75	75	0.039	28	1.12	0.10
	90	90	0.039	22	0.91	0.08
	100	100	0.039	20	0.82	0.08
<b>2.9 x 2.9</b>	25	25	0.052	80	4.20	0.39
	30	30	0.052	68	3.56	0.33
	50	50	0.052	40	2.13	0.20
	55	55	0.052	36	1.94	0.18
	65	65	0.052	32	1.70	0.16
	75	75	0.052	28	1.49	0.14
	90	90	0.052	22	1.20	0.11
	100	100	0.052	20	1.09	0.10
<b>3 x 3</b>	25	25	0.056	80	4.49	0.42
	30	30	0.056	68	3.81	0.35
	50	50	0.056	40	2.27	0.21
	55	55	0.056	36	2.07	0.19
	65	65	0.056	32	1.81	0.17
	75	75	0.056	28	1.59	0.15
	90	90	0.056	22	1.28	0.12
	100	100	0.056	20	1.16	0.11
<b>4 x 4</b>	25	25	0.099	80	7.95	0.74
	30	30	0.099	68	6.73	0.63
	32	32	0.099	64	6.32	0.59
	50	50	0.099	40	4.00	0.37
	65	65	0.099	32	3.19	0.30
	75	75	0.099	28	2.78	0.26
	90	90	0.099	22	2.24	0.21
	100	100	0.099	20	2.03	0.19



# Welded Wire Mesh

## Available in

<b>Wire Diameter</b>	- 1.8 mm to 12 mm
<b>Pitch</b>	- 25 mm to 300 mm
(Main bar in multiple of 50 mm, Crossbar - customized)	
<b>Max. Width</b>	- 2.4 mtr
<b>Min. Width</b>	- Customized
<b>* Customization as per Client Requirement also available</b>	



## Cold Drawing

Wire rods made of Low Carbon Steel of grades SAE (1008, 1010) with carbon content less than 0.15% are cold drawn to achieve required tensile strength.



Ribbed Profile

## Ribbing

While cold rolling helps in increasing the tensile strength, the ribbing guarantees the perfect bond with concrete. Ribbing gives the wire the visual and mechanical properties similar to a rebar. Crack widths in concrete elements are controlled to the minimum because force is well distributed through bond effect of ribbed wire as compared to plain wire.

**Also Available in RIB-BAR & TMT BARS (IS-1786), 25 mm to 300 mm**

## IS 1566

Hard drawn steel wire fabric for concrete reinforcement with steel complying to IS 432-II



**SACHI STEEL SOLUTIONS PVT. LTD.**  
301/302, Abhijeet-2,  
Above Standard Chartered Bank,  
Mithakhali Six Roads, Navrangpura,  
Ahmedabad-380 009.

**For Technical Assistance :** 96019 77360  
**For Dealership Inquiry :** 98250 40275  
**For Sales :** Central Gujarat (Ahmedabad / Panchmahal / Dahod / Godhra / Anand / Nadiad) **Mobile** 9227682116 • Baroda / Bharuch / Ankleshwar **Mobile** 7574879360 • North Gujarat (Himmatnagar / Mehsana / Palanpur / Patan / Unjha / Deesa) **Mobile** 7574873397 • South Gujarat (Surat / Navsari / Valsad / Vapi) **Mobile** 9827200445

# Square Welded Mesh

SACHI WELDMESH	Wire Spacing		KG		Mesh	Mesh
	Main	Cross	Per	Total	KG	KG
	MM	MM	MTR	No	Per MTR	Per FEET
<b>2 x 2</b>	25	25	0.025	80	1.98	0.18
	30	30	0.025	68	1.67	0.16
	50	50	0.025	40	0.99	0.09
	65	65	0.025	32	0.78	0.07
	75	75	0.025	28	0.68	0.06
	100	100	0.025	20	0.49	0.05
<b>2.4 x 2.4</b>	25	25	0.036	80	2.84	0.26
	30	30	0.036	68	2.41	0.22
	50	50	0.036	40	1.42	0.13
	65	65	0.036	32	1.13	0.10
	75	75	0.036	28	0.98	0.09
	100	100	0.036	20	0.71	0.07
<b>2.5 x 2.5</b>	25	25	0.039	80	3.09	0.29
	30	30	0.039	68	2.61	0.24
	50	50	0.039	40	1.54	0.14
	65	65	0.039	32	1.23	0.11
	75	75	0.039	28	1.07	0.10
	100	100	0.039	20	0.77	0.07
<b>2.8 x 2.8</b>	25	25	0.048	80	3.87	0.36
	30	30	0.048	68	3.27	0.30
	50	50	0.048	40	1.94	0.18
	65	65	0.048	32	1.54	0.14
	75	75	0.048	28	1.34	0.12
	100	100	0.048	20	0.97	0.09
<b>3 x 3</b>	25	25	0.056	80	4.44	0.41
	30	30	0.056	68	3.76	0.35
	50	50	0.056	40	2.22	0.21
	65	65	0.056	32	1.76	0.16
	75	75	0.056	28	1.54	0.14
	100	100	0.056	20	1.11	0.10
	200	200	0.056	10	0.56	0.05
<b>3.5 x 3.5</b>	25	25	0.076	80	6.05	0.56
	30	30	0.076	68	5.12	0.48
	50	50	0.076	40	3.02	0.28
	100	100	0.076	20	1.51	0.14
	150	150	0.076	13	1.01	0.09
	200	200	0.076	10	0.76	0.07
<b>3.9 x 3.9</b>	50	50	0.094	40	3.76	0.35
	100	100	0.094	21	1.97	0.18
	150	150	0.094	13	1.25	0.12
	200	200	0.094	10	0.94	0.09
<b>4 x 4</b>	50	50	0.099	40	3.95	0.37
	100	100	0.099	21	2.07	0.19
	150	150	0.099	13	1.32	0.12
	200	200	0.099	10	0.99	0.09

SACHI WELDMESH	Wire Spacing		Area Per Mesh		KG		Mesh	Mesh
	Main	Cross	Main	Cross	Per	Total	KG	KG
	MM	MM	MM	MM	MTR	No	Per MTR	Per FEET
<b>5 x 5</b>	50	50	394	394	0.154	40	6.17	0.574
	100	100	197	197	0.154	20	3.09	0.287
	150	150	131	131	0.154	13	2.06	0.191
	200	200	98	98	0.154	10	1.54	0.143
<b>6 x 6</b>	50	50	283	283	0.222	40	8.89	0.826
	100	100	283	283	0.222	20	4.44	0.413
	150	150	189	189	0.222	13	2.96	0.275
	200	200	141	141	0.222	10	2.22	0.207
<b>7 x 7</b>	100	100	385	385	0.302	20	6.05	0.562
	150	150	257	257	0.302	13	4.03	0.375
	200	200	193	193	0.302	10	3.02	0.281
	250	250	154	154	0.302	8	2.42	0.225
	300	300	128	128	0.302	7	2.02	0.187
<b>8 x 8</b>	100	100	503	503	0.395	20	7.90	0.734
	150	150	335	335	0.395	13	5.27	0.490
	200	200	251	251	0.395	10	3.95	0.367
	250	250	201	201	0.395	8	3.16	0.294
	300	300	168	168	0.395	7	2.63	0.245
<b>9 x 9</b>	100	100	636	636	0.500	20	10.00	0.929
	150	150	424	424	0.500	13	6.67	0.620
	200	200	318	318	0.500	10	5.00	0.465
	250	250	254	254	0.500	8	4.00	0.372
	300	300	212	212	0.500	7	3.33	0.310
<b>10 x 10</b>	100	100	786	786	0.617	20	12.35	1.147
	150	150	524	524	0.617	13	8.23	0.765
	200	200	393	393	0.617	10	6.17	0.574
	250	250	314	314	0.617	8	4.94	0.459
	300	300	262	262	0.617	7	4.12	0.382
<b>11 x 11</b>	100	100	951	951	0.747	20	14.94	1.388
	150	150	634	634	0.747	13	9.96	0.926
	200	200	475	475	0.747	10	7.47	0.694
	250	250	380	380	0.747	8	5.98	0.555
	300	300	317	317	0.747	7	4.98	0.463
<b>12 x 12</b>	100	10	1131	1131	0.889	20	17.78	1.652
	150	150	754	754	0.889	13	11.85	1.101
	200	200	566	566	0.889	10	8.89	0.826
	250	250	452	452	0.889	8	7.11	0.661
	300	300	377	377	0.889	7	5.93	0.551